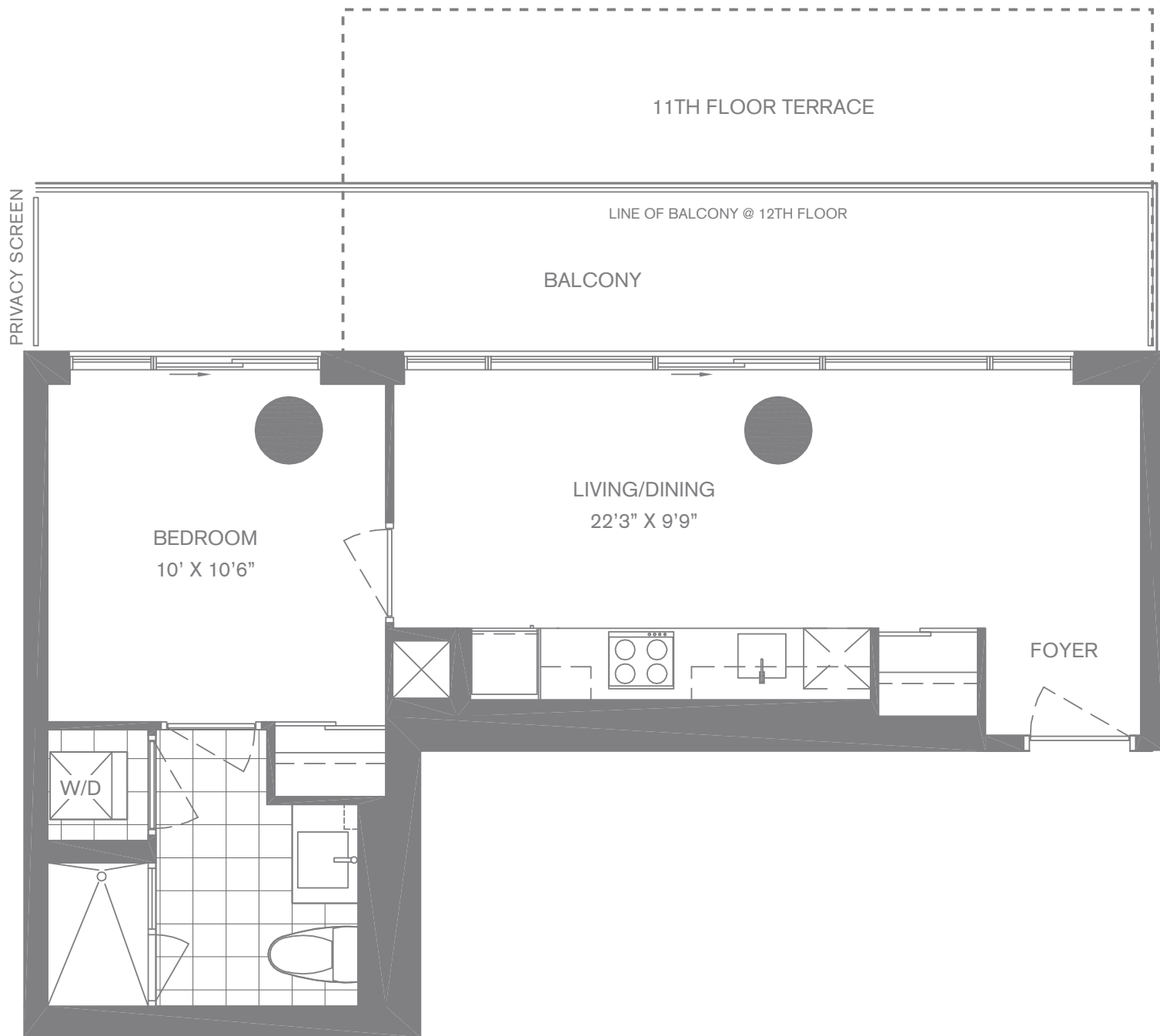


THE CAPOTE 495 SQ. FT.

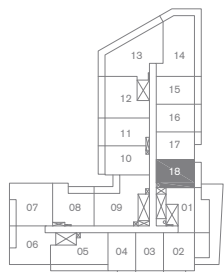
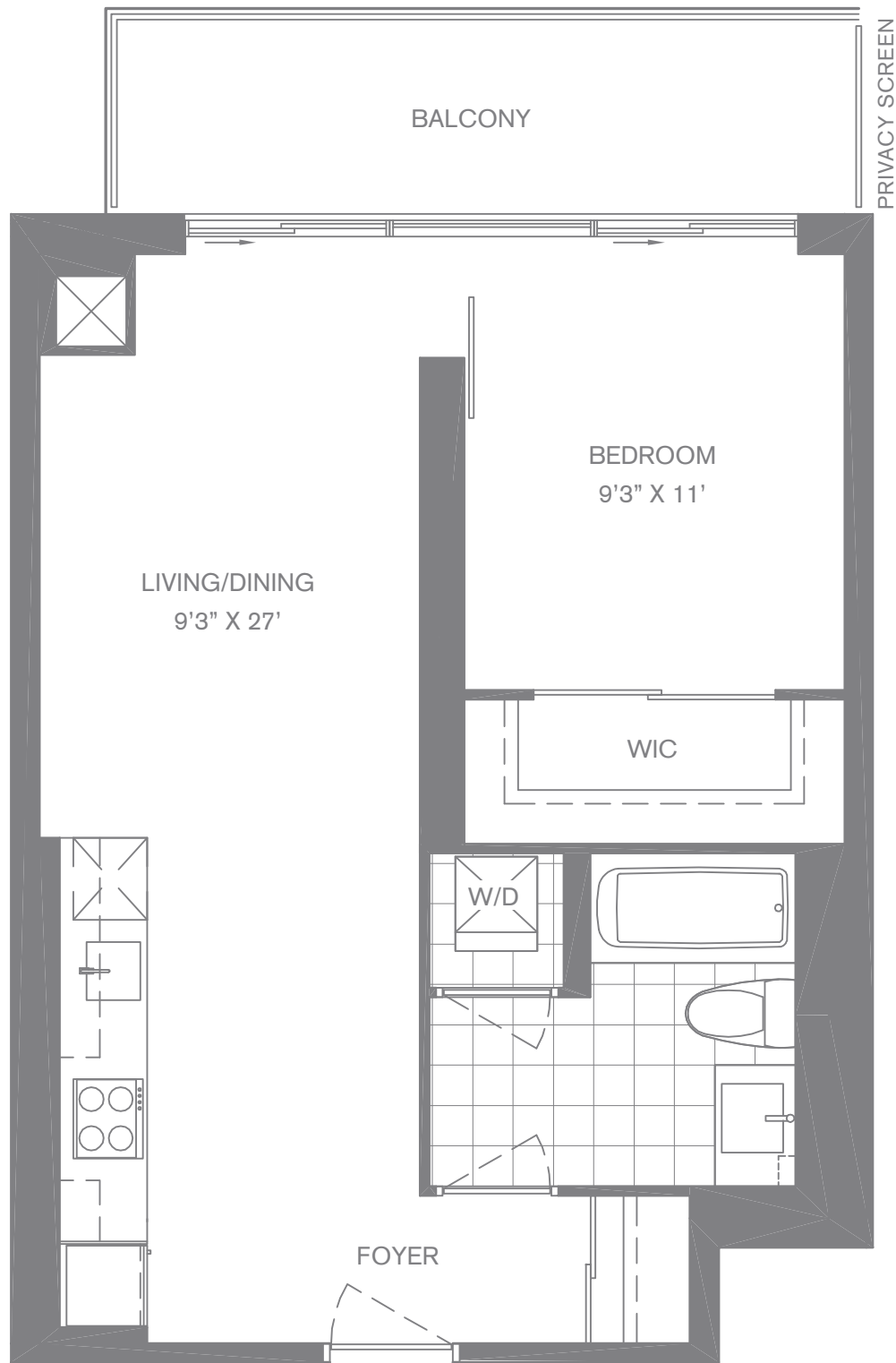
ONE BEDROOM + BALCONY (145 SQ.FT.)
ONE BEDROOM + TERRACE (245 SQ.FT.) (FLOOR 11)



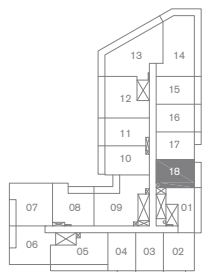
(1B-1)

THE THEROUX 560 SQ. FT.

ONE BEDROOM + BALCONY (75 SQ.FT.)



FLOOR 11



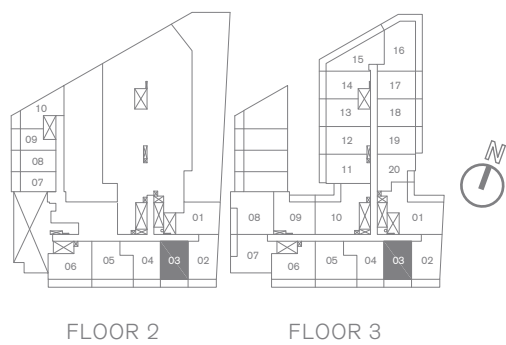
FLOORS 12-23



(1B-2)

THE LA CROIX 567 SQ. FT.

ONE BEDROOM + BALCONY (90 SQ.FT)



FLOOR 2

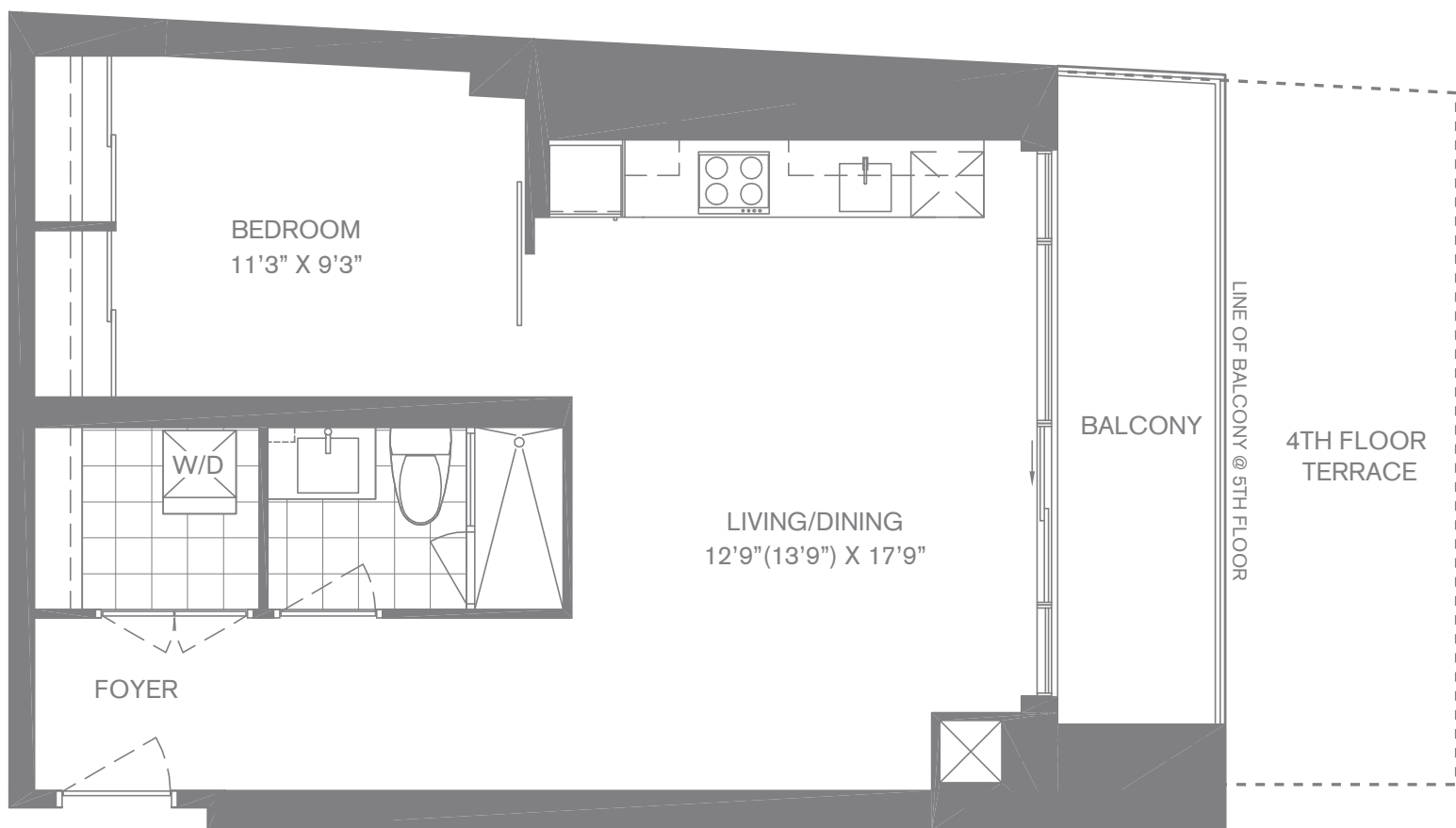
FLOOR 3

(1B-3)

Note: Materials, specifications and floorplans are subject to change without notice. Actual usable floor space may vary from the stated floor area. All room dimensions are shown as approximate. E.&O.E. September 2008.

THE POLLACK 598 SQ. FT.

ONE BEDROOM + BALCONY (65 SQ.FT.)
ONE BEDROOM + TERRACE (170 SQ.FT.) (FLOOR 4)

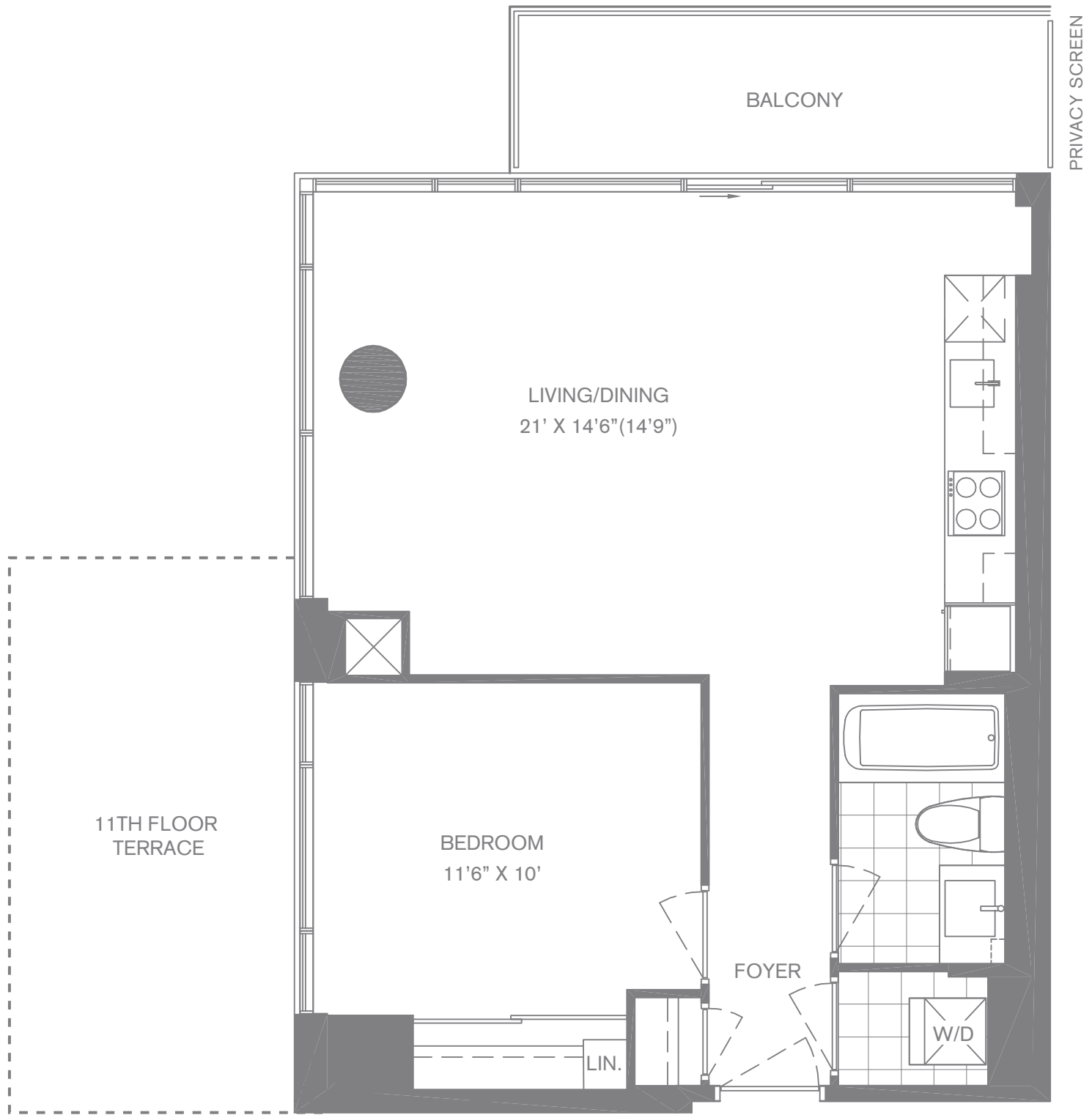


(1B-8)

Note: Materials, specifications and floorplans are subject to change without notice. Actual usable floor space may vary from the stated floor area. All room dimensions are shown as approximate. E.&O.E. September 2008.

THE GIVENCHY 625 SQ. FT.

ONE BEDROOM + BALCONY (65 SQ.FT.)
 ONE BEDROOM + BALCONY (65 SQ.FT.) + TERRACE (180 SQ.FT.)

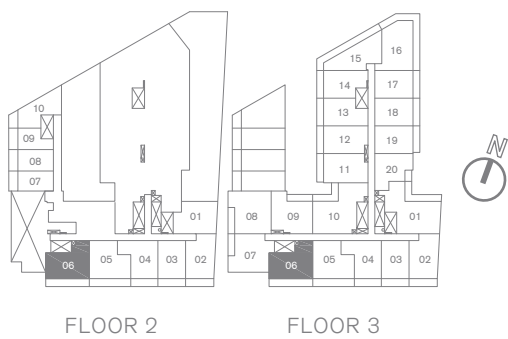
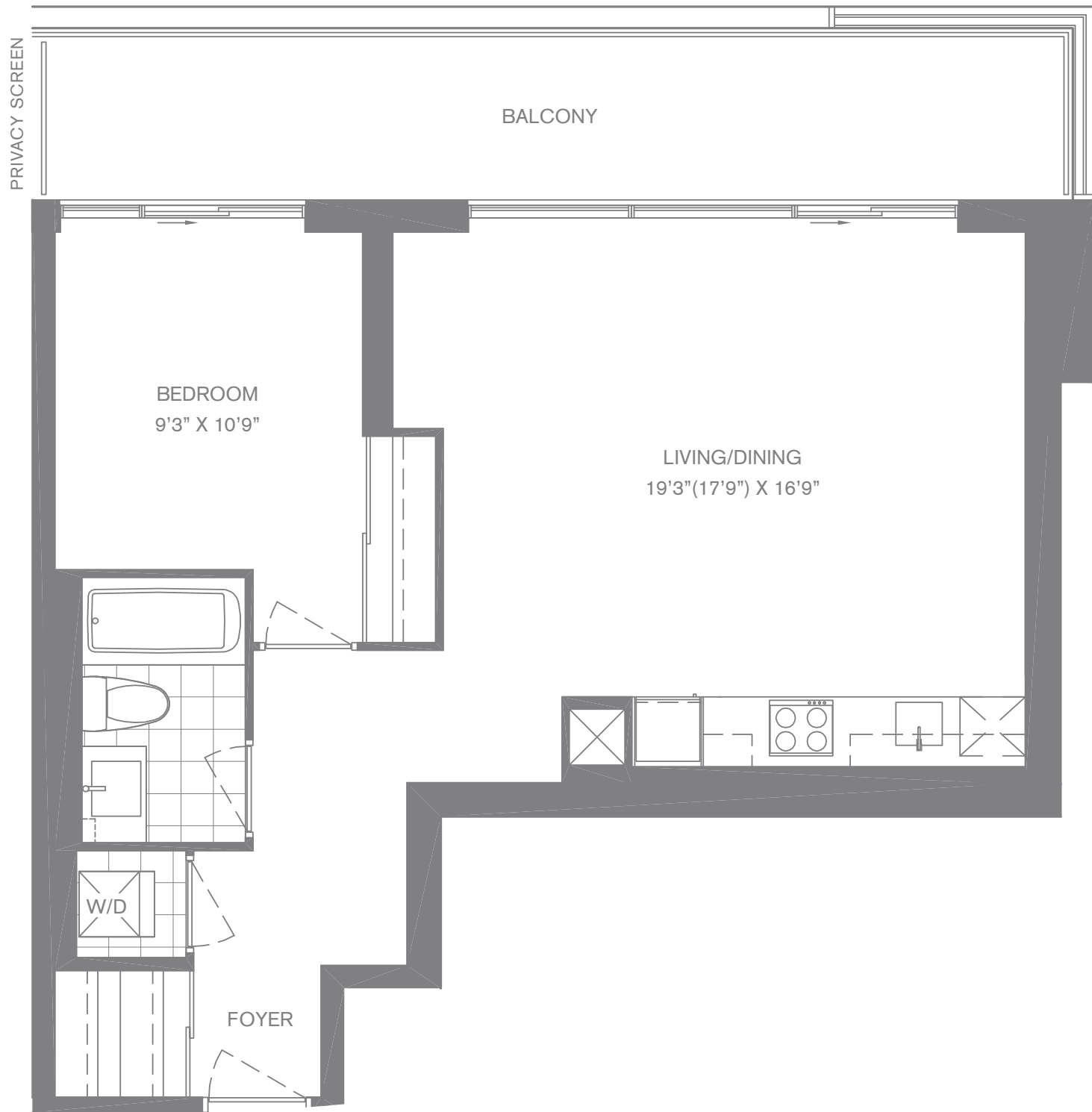


(1B-9)

Note: Materials, specifications and floorplans are subject to change without notice. Actual usable floor space may vary from the stated floor area. All room dimensions are shown as approximate. E.&O.E. September 2008.

THE WOLFE 680 SQ. FT.

ONE BEDROOM + BALCONY (145 SQ.FT.)

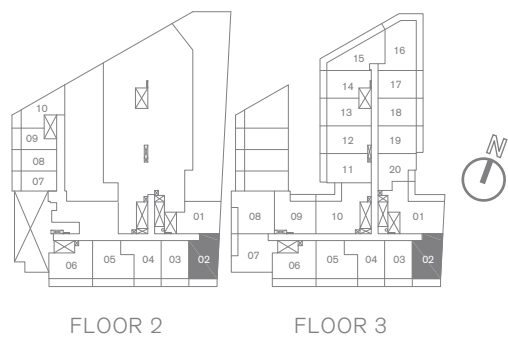
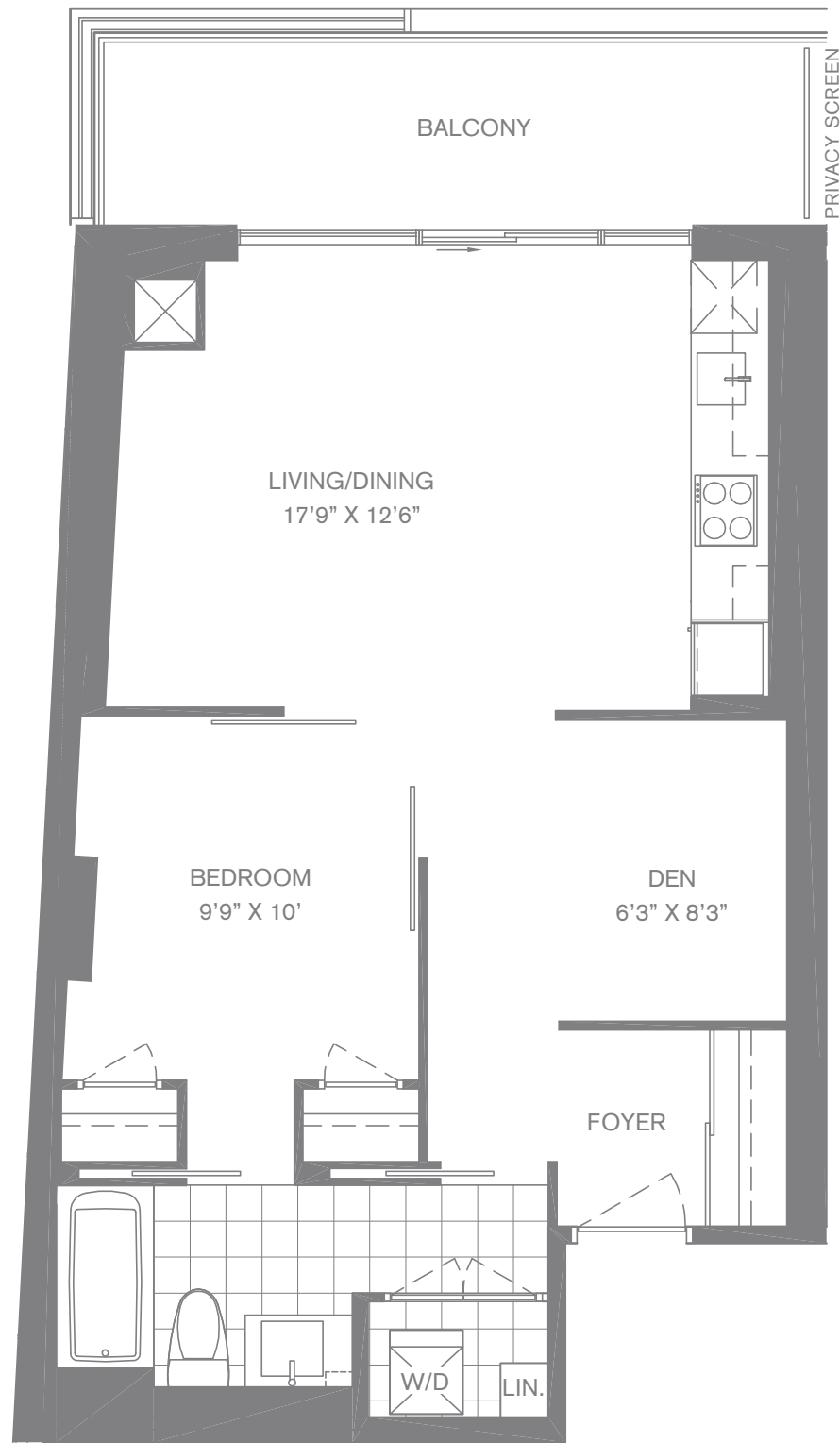


(1B-10)

Note: Materials, specifications and floorplans are subject to change without notice. Actual usable floor space may vary from the stated floor area. All room dimensions are shown as approximate. E.&O.E. September 2008.

THE CAMUS 655 SQ. FT.

ONE BEDROOM + DEN + BALCONY (85 SQ.FT.)

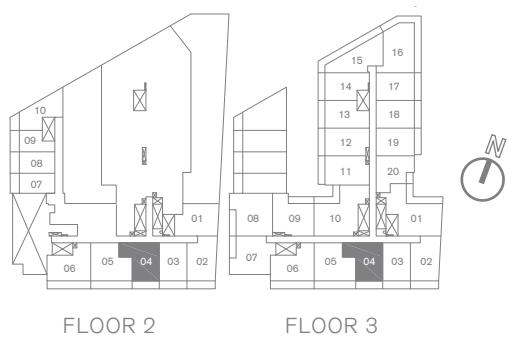
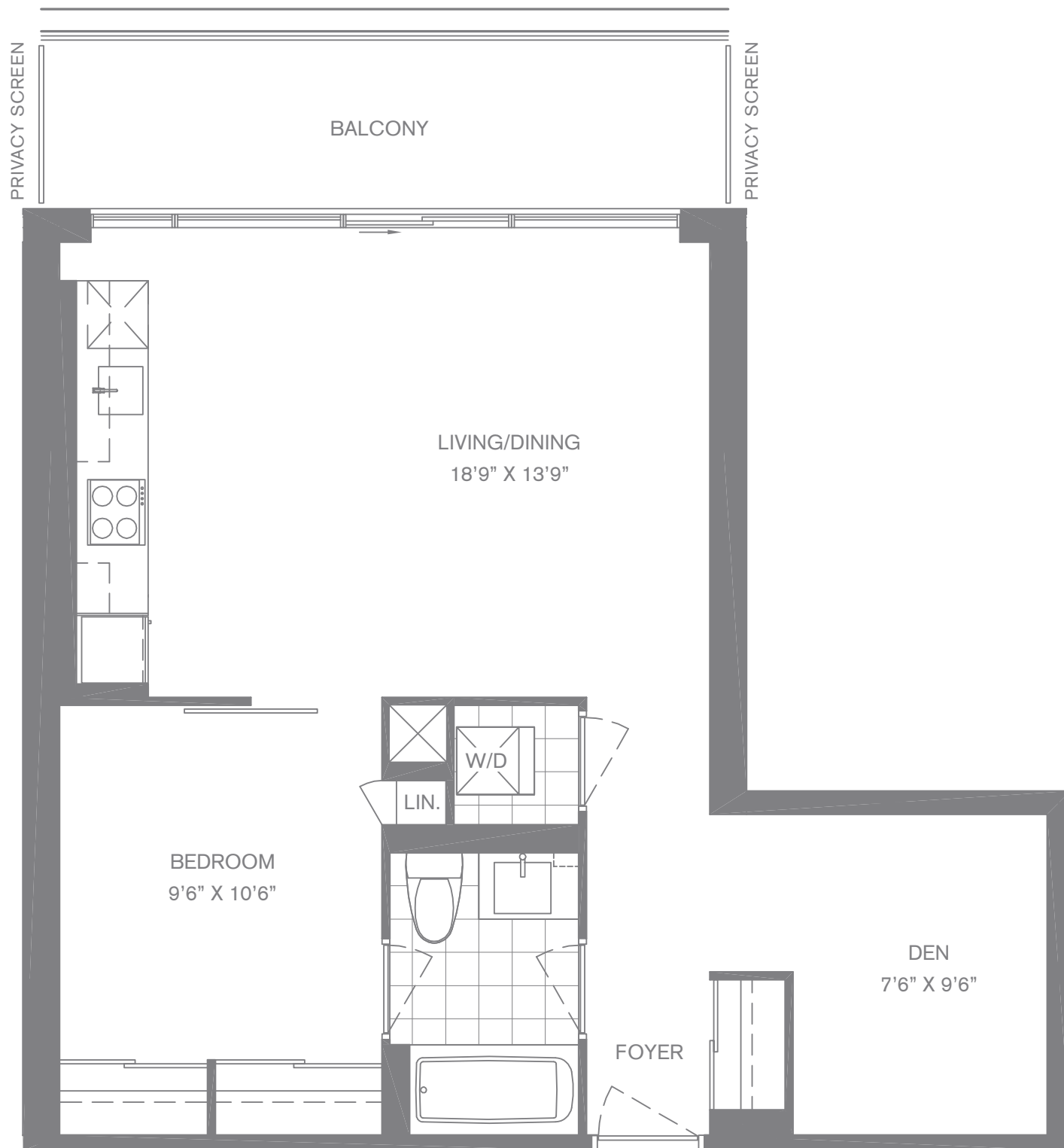


(1B+D-1)

Note: Materials, specifications and floorplans are subject to change without notice. Actual usable floor space may vary from the stated floor area. All room dimensions are shown as approximate. E.&O.E. September 2008.

THE SALINGER 670 SQ. FT.

ONE BEDROOM + DEN + BALCONY (90 SQ.FT.)

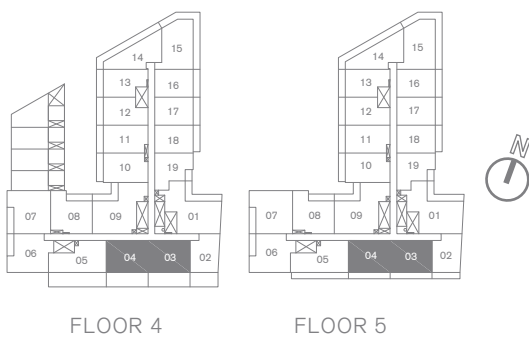
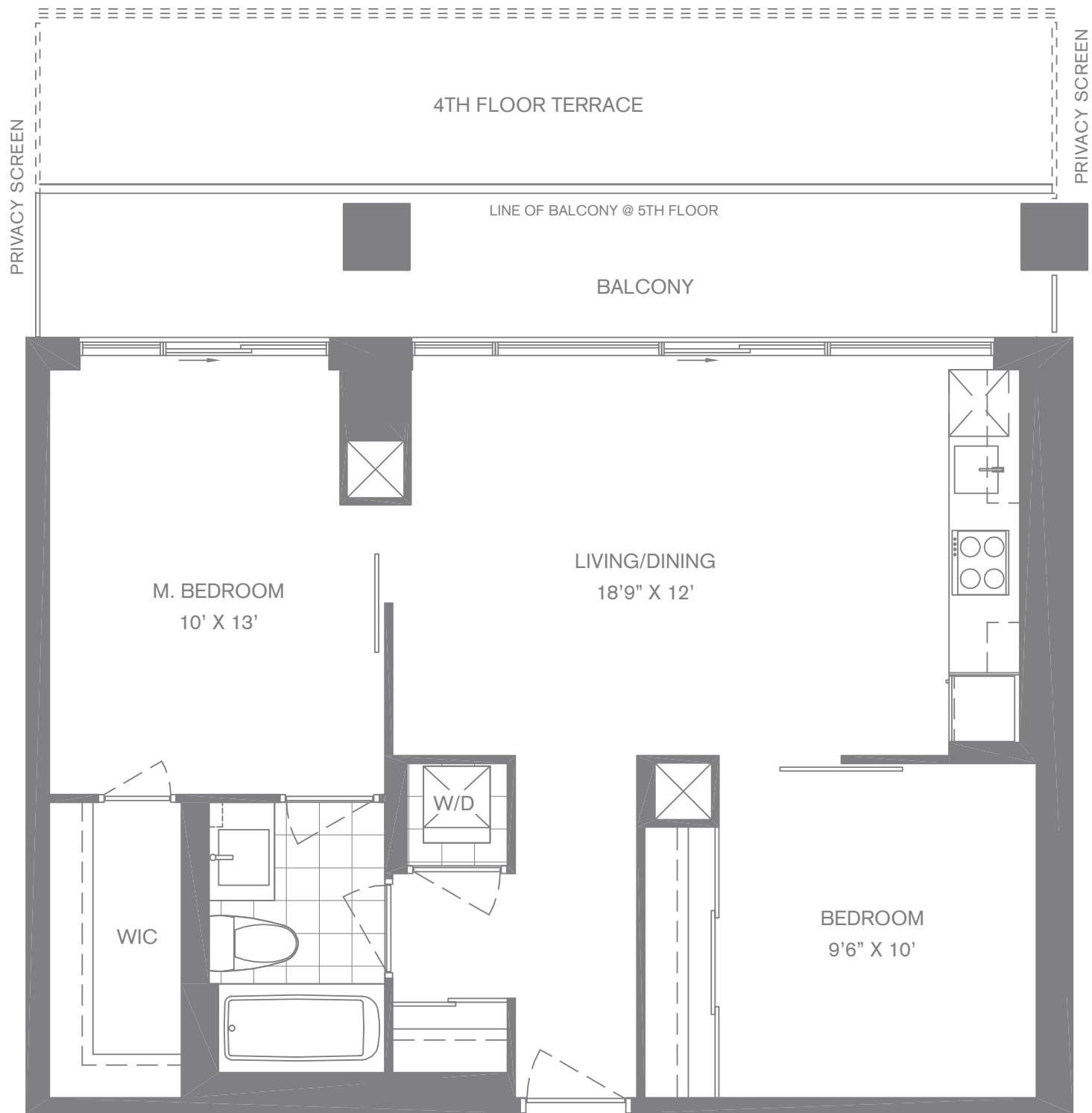


(1B+D-3)

Note: Materials, specifications and floorplans are subject to change without notice. Actual usable floor space may vary from the stated floor area. All room dimensions are shown as approximate. E.&O.E. September 2008.

THE CARR 710 SQ. FT.

TWO BEDROOM + BALCONY (115 SQ.FT.) (FLOOR 5)
 TWO BEDROOM + TERRACE (275 SQ.FT.) (FLOOR 4)

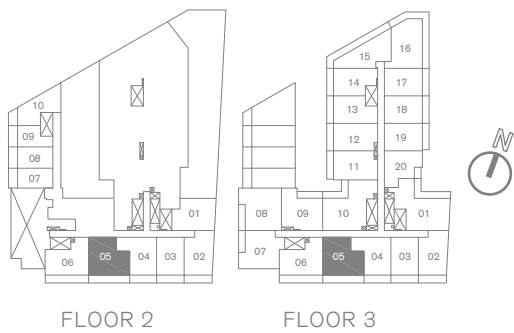
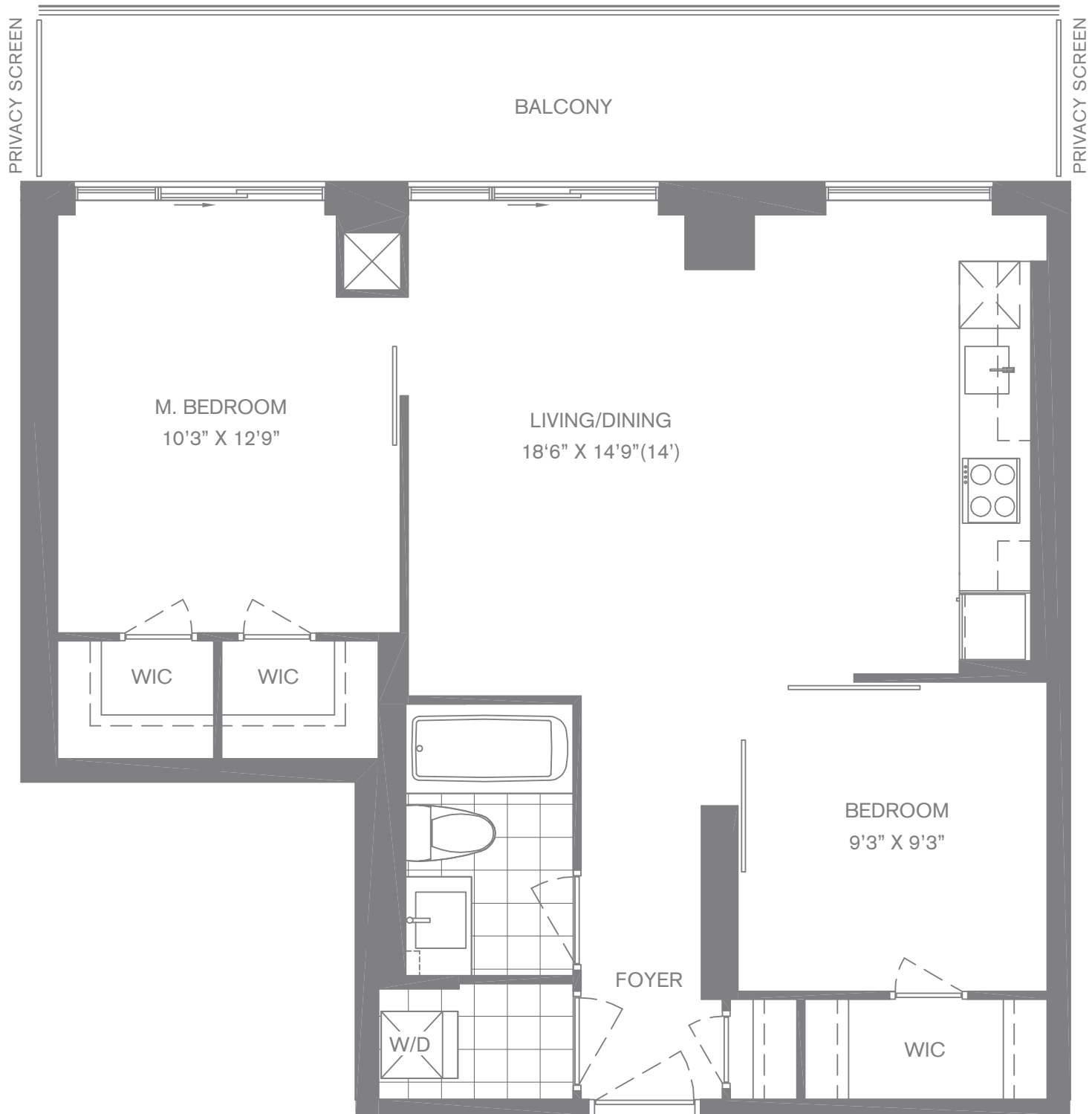


(2B-1)

Note: Materials, specifications and floorplans are subject to change without notice. Actual usable floor space may vary from the stated floor area. All room dimensions are shown as approximate. E.&O.E. September 2008.

THE ORWELL 745 SQ. FT.

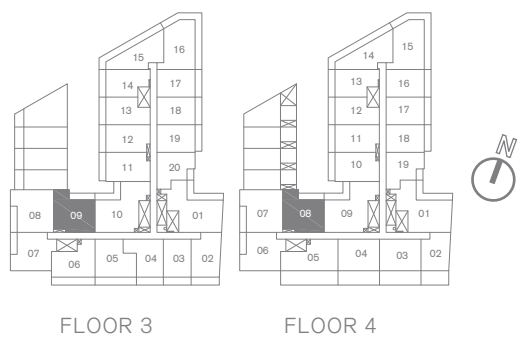
TWO BEDROOM + BALCONY (140 SQ.FT.)



(2B-3)

THE DIOR 775 SQ. FT.

TWO BEDROOM + BALCONY (80 SQ.FT.)

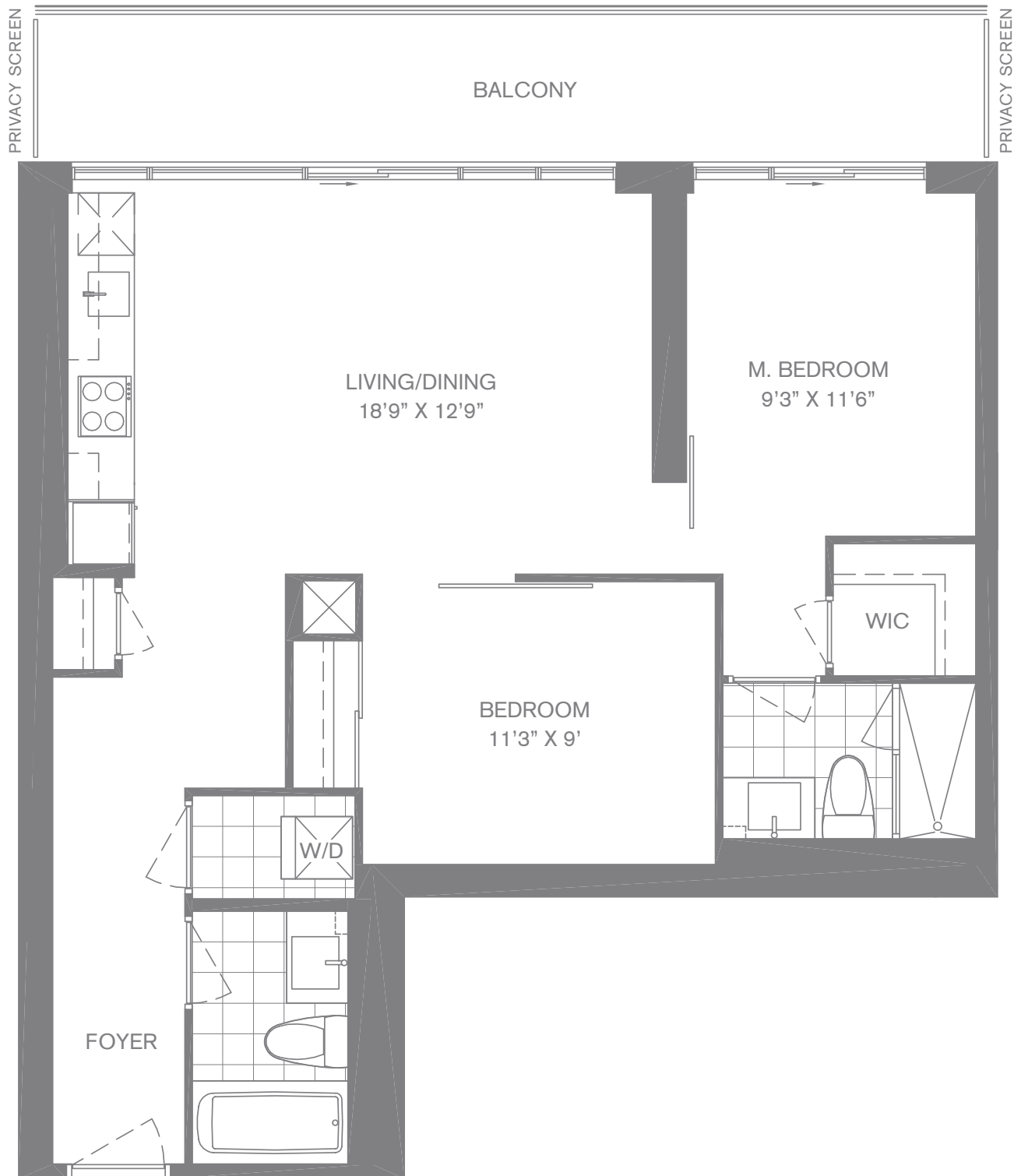


(2B-5)

Note: Materials, specifications and floorplans are subject to change without notice. Actual usable floor space may vary from the stated floor area. All room dimensions are shown as approximate. E.&O.E. September 2008.

THE HEMMINGWAY 827 SQ. FT.

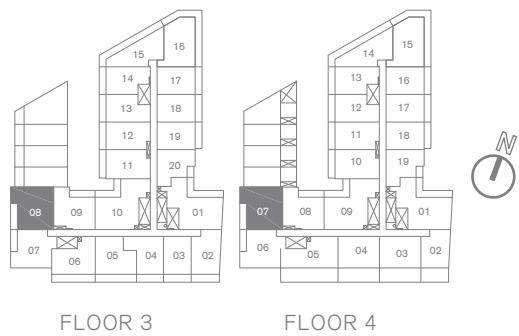
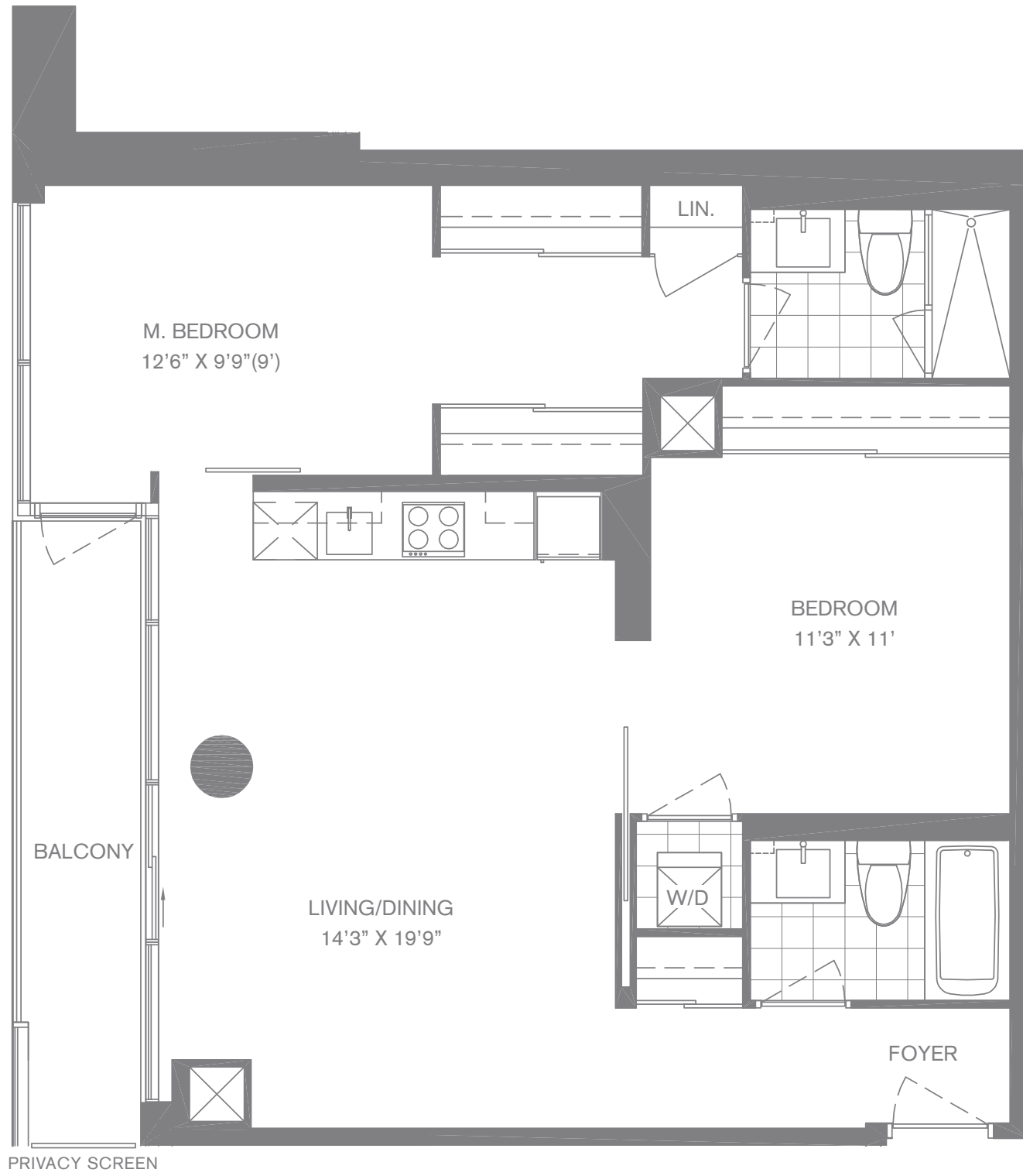
TWO BEDROOM + BALCONY (135 SQ.FT.)



(2B-9)

THE ATWOOD 899 SQ. FT.

TWO BEDROOM + BALCONY (60 SQ.FT.)

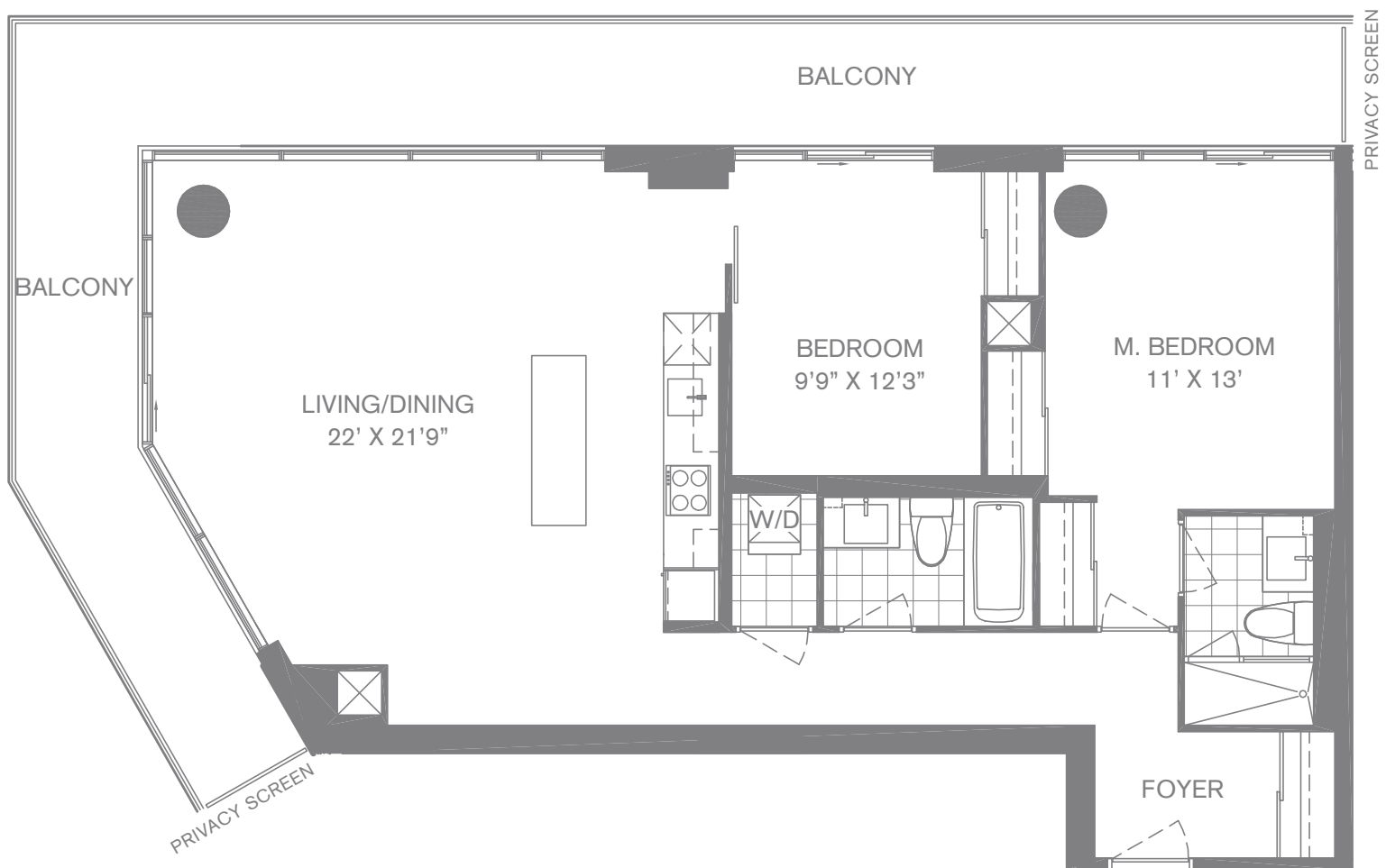


(2B-10)

Note: Materials, specifications and floorplans are subject to change without notice. Actual usable floor space may vary from the stated floor area. All room dimensions are shown as approximate. E.&O.E. September 2008.

THE CHANEL 1085 SQ. FT.

TWO BEDROOM + BALCONY (355 SQ.FT.)

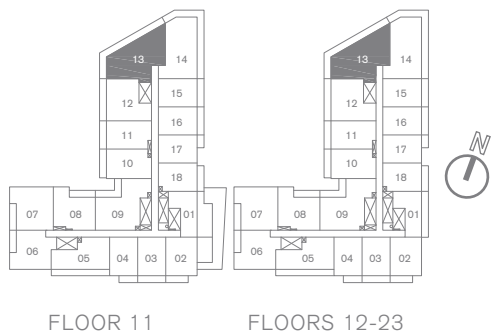
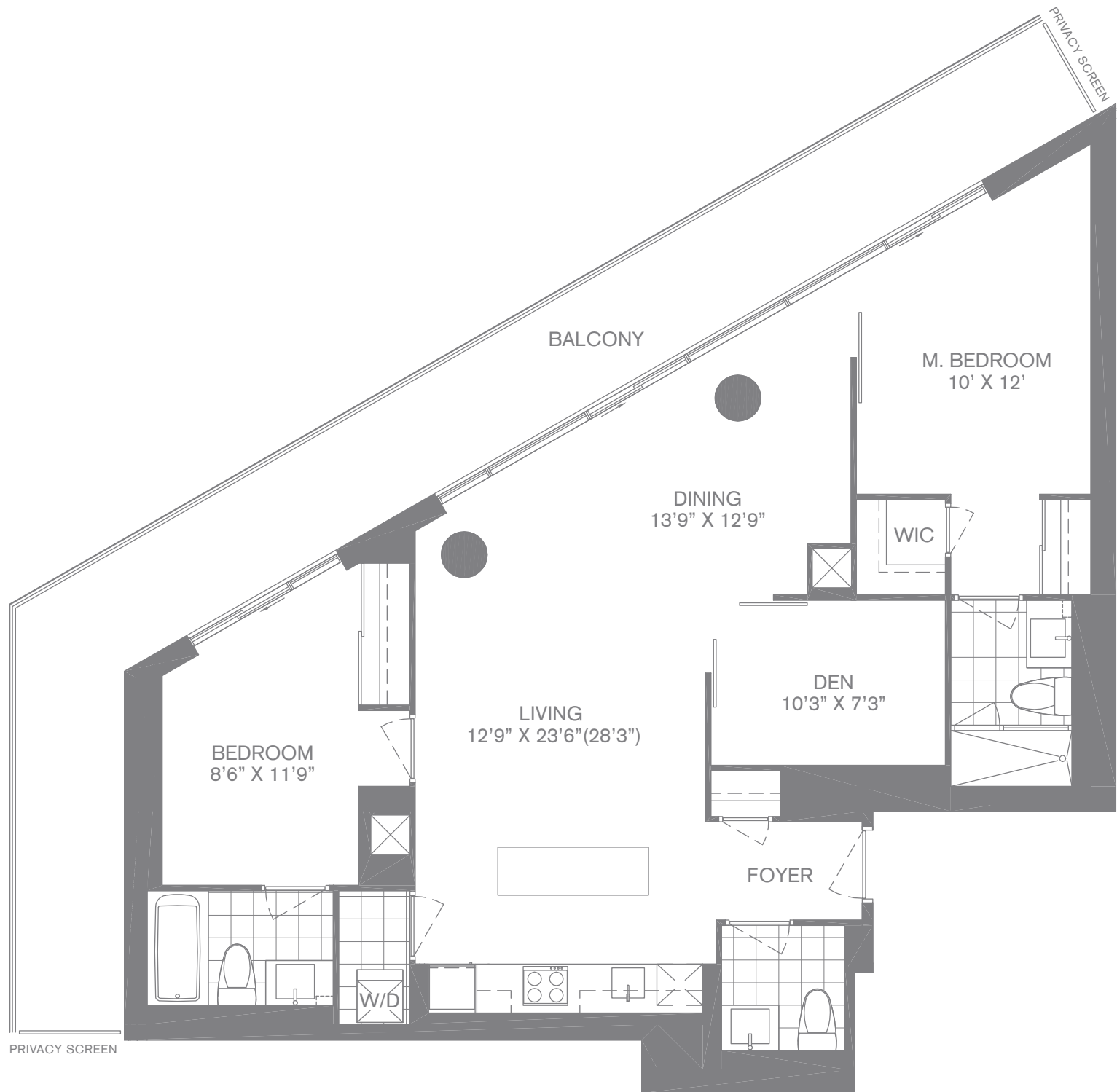


(2B-12)

Note: Materials, specifications and floorplans are subject to change without notice. Actual usable floor space may vary from the stated floor area. All room dimensions are shown as approximate. E.&O.E. September 2008.

THE VALENTINO 1112 SQ. FT.

TWO BEDROOM + DEN + BALCONY (310 SQ.FT.)

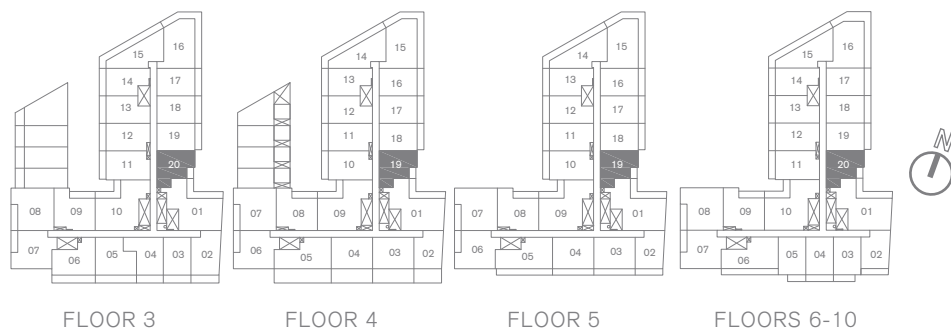
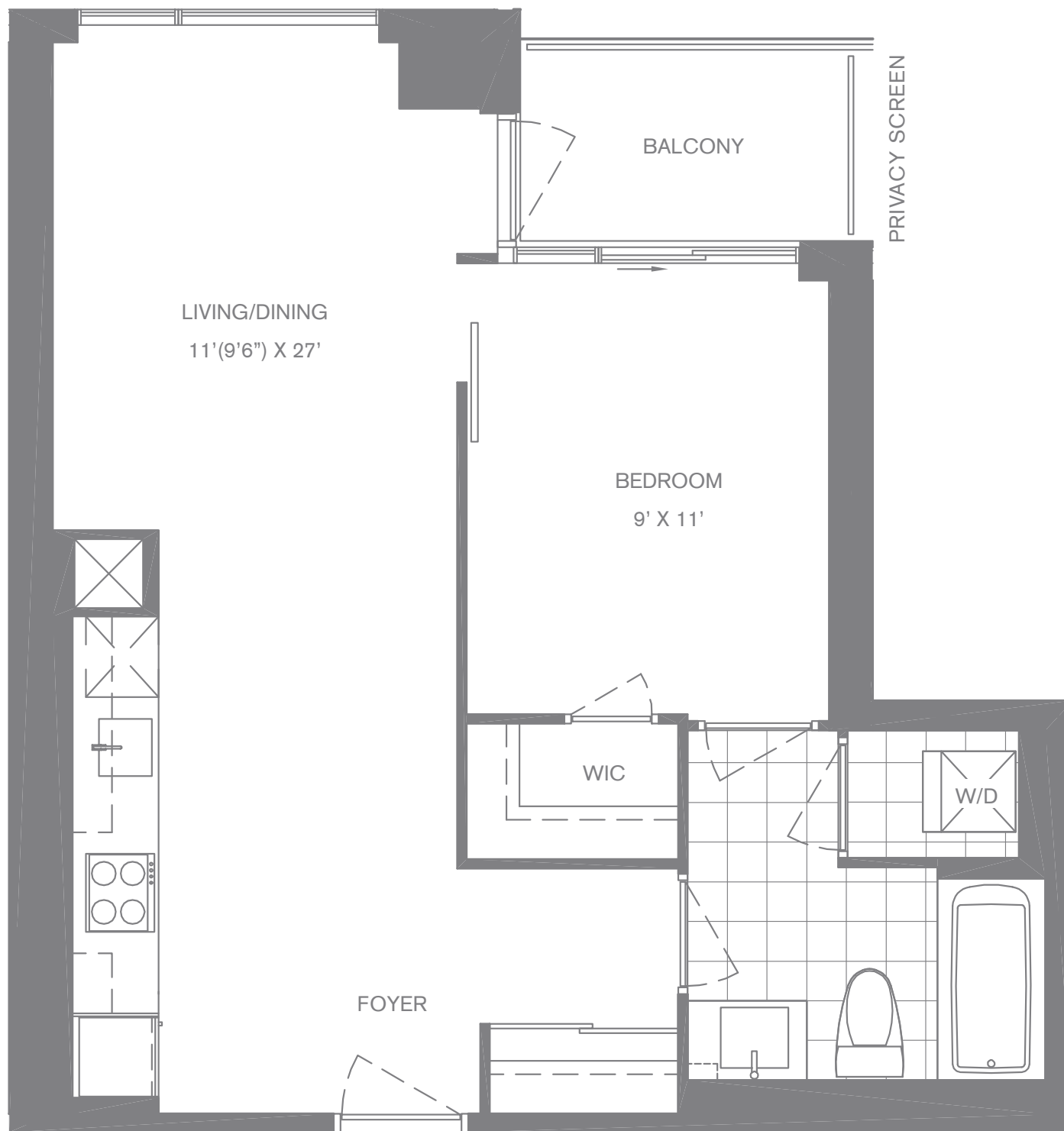


(2B+D-1)

Note: Materials, specifications and floorplans are subject to change without notice. Actual usable floor space may vary from the stated floor area. All room dimensions are shown as approximate. E.&O.E. September 2008.

THE PRADA 575 SQ. FT.

ONE BEDROOM + BALCONY (30 SQ.FT.)

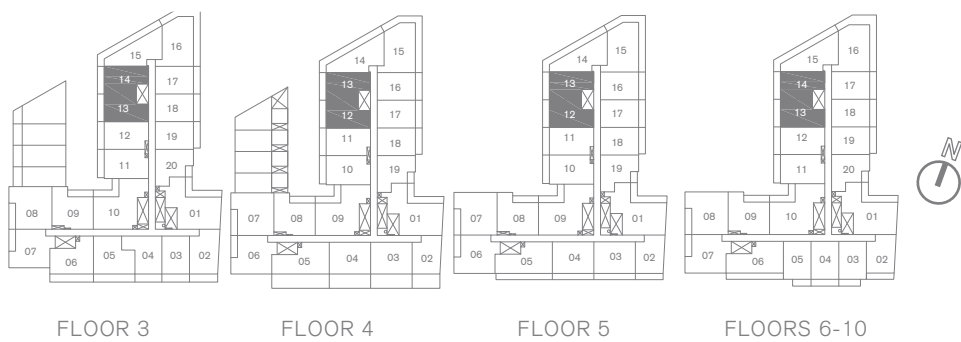
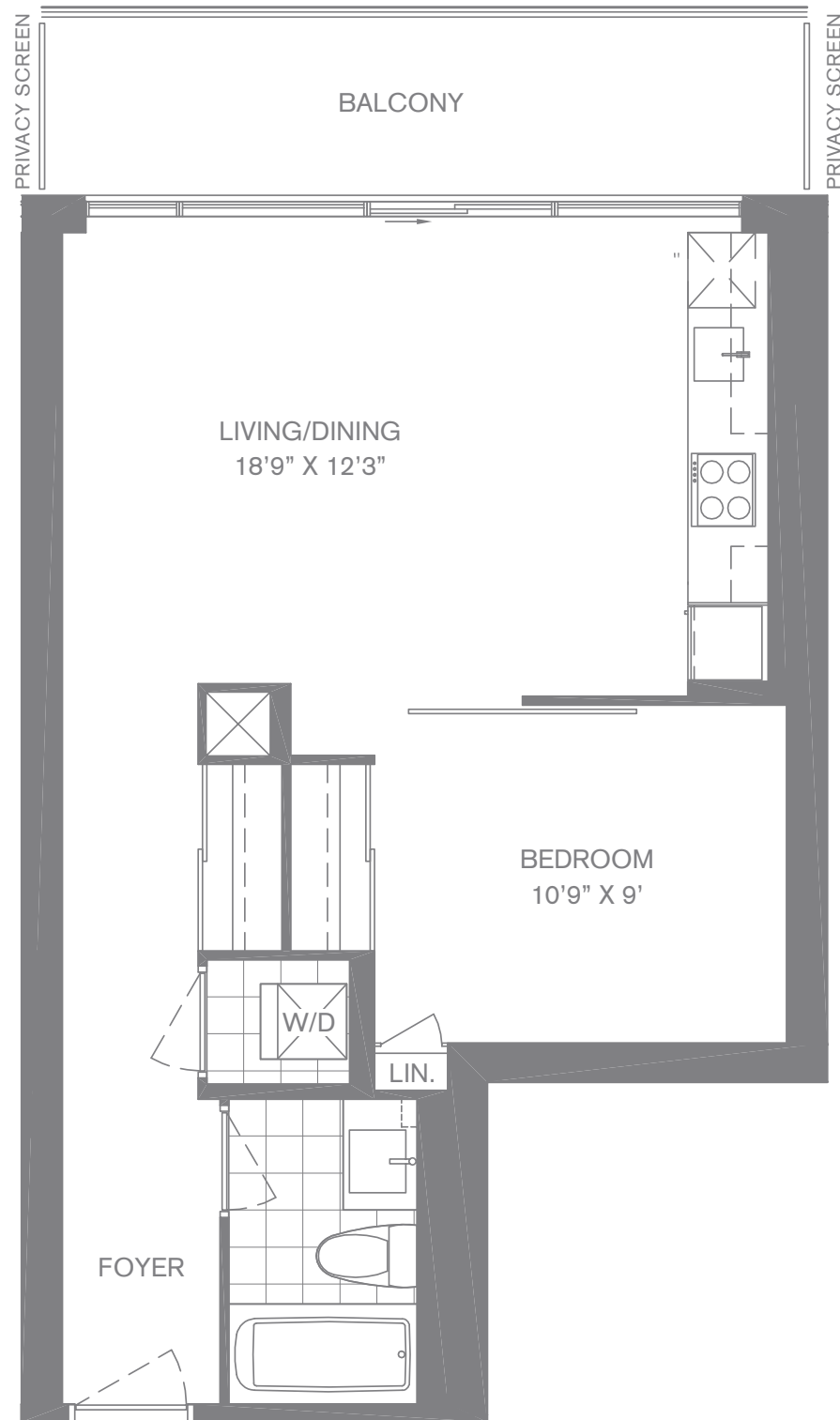


(1B-6)

Note: Materials, specifications and floorplans are subject to change without notice. Actual usable floor space may vary from the stated floor area. All room dimensions are shown as approximate. E.&O.E. September 2008.

THE CEZANNE 586 SQ. FT.

ONE BEDROOM + BALCONY (85 SQ.FT.)

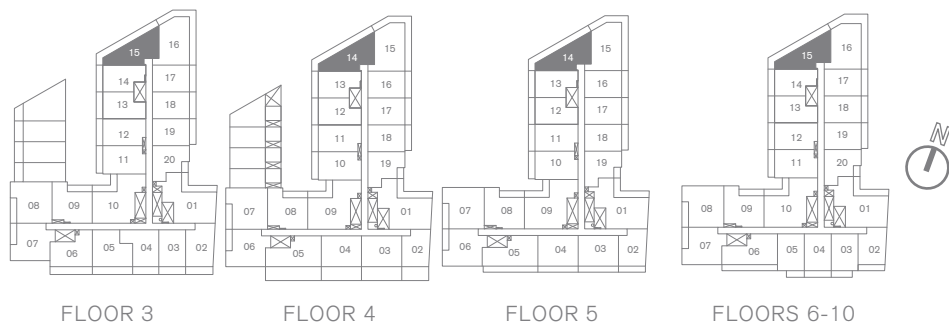
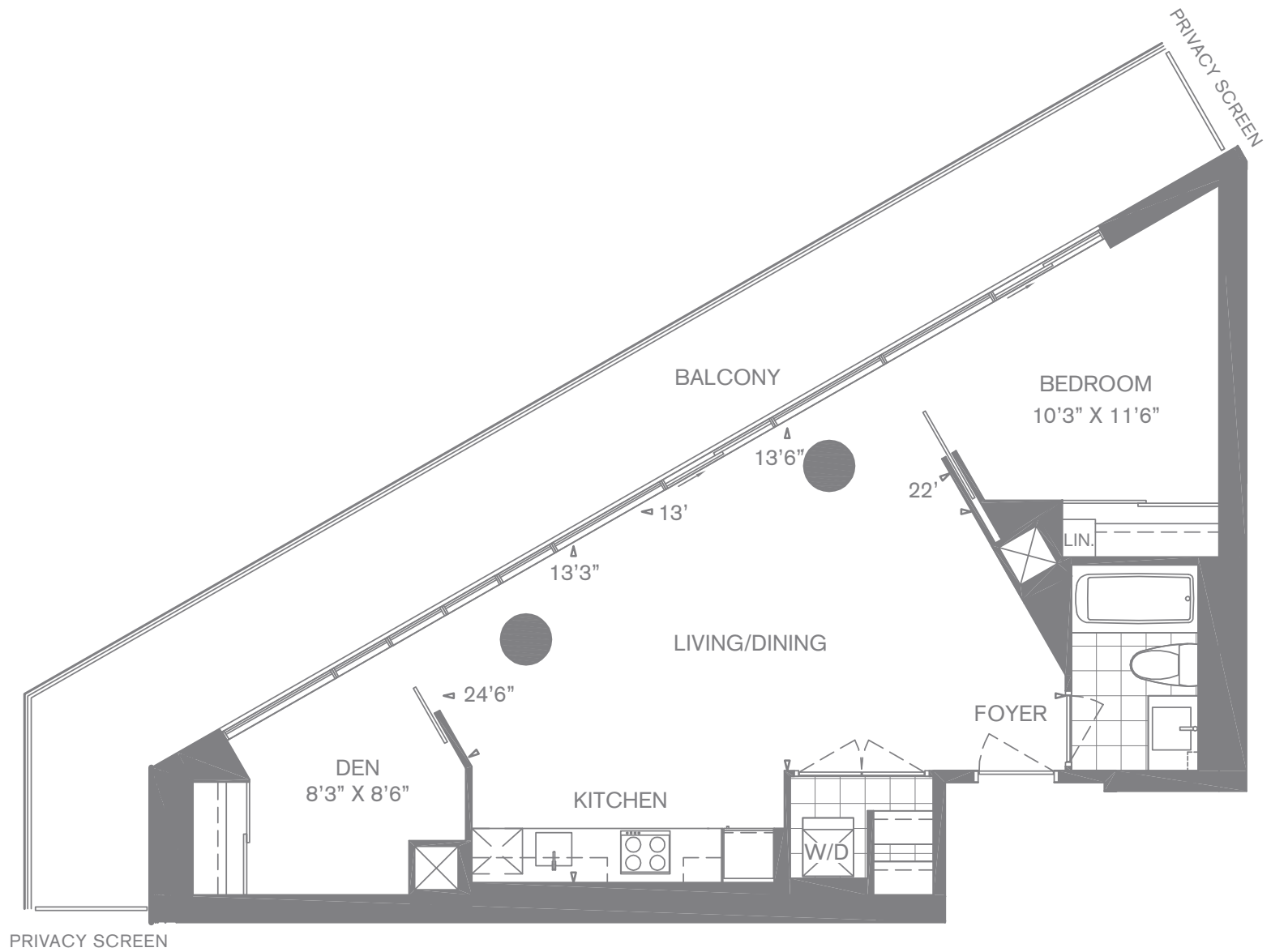


(1B-7)

Note: Materials, specifications and floorplans are subject to change without notice. Actual usable floor space may vary from the stated floor area. All room dimensions are shown as approximate. E.&O.E. September 2008.

THE CAVALLI 709 SQ. FT.

ONE BEDROOM + DEN + BALCONY (260 SQ.FT.)

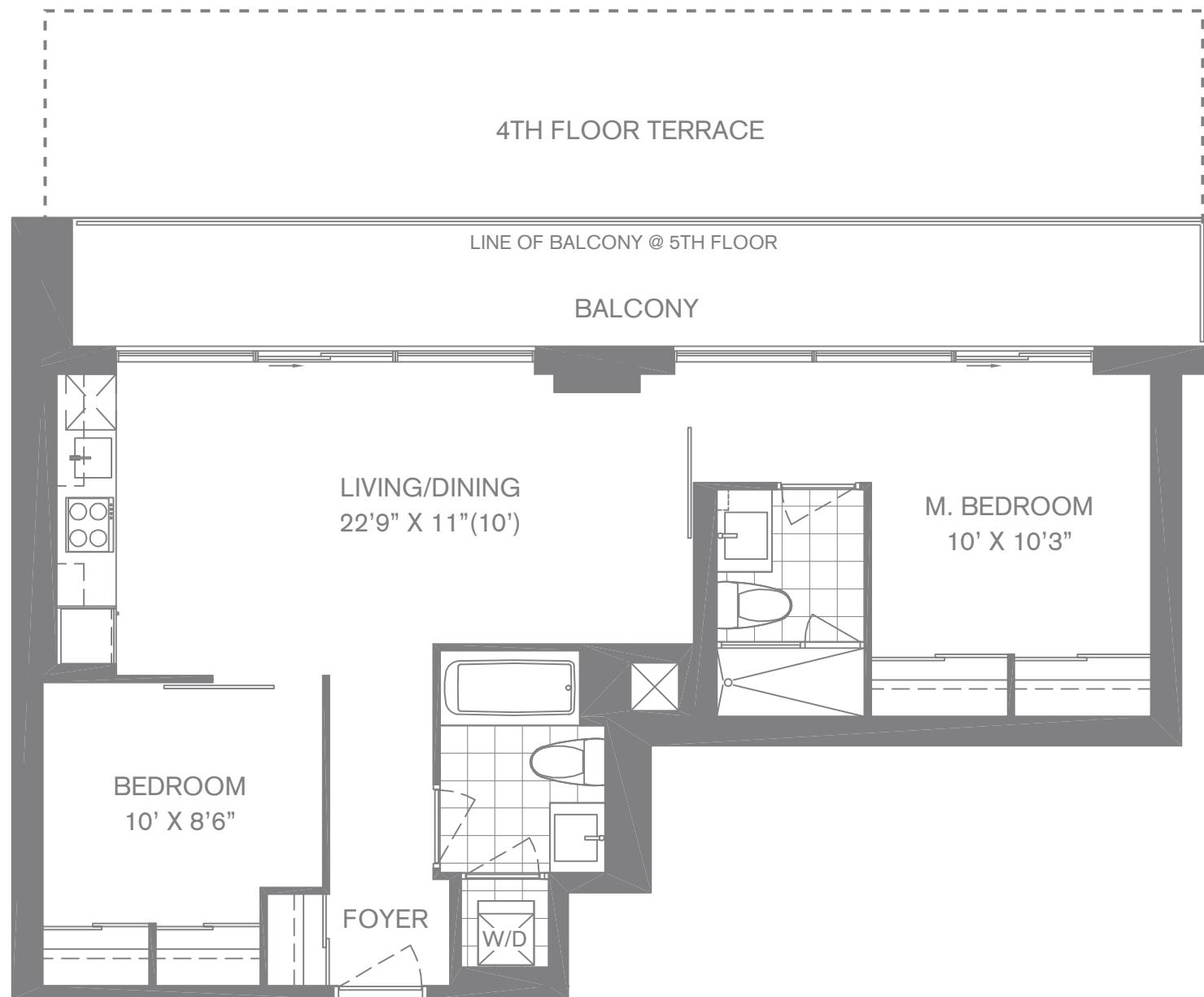


(1B+D-4)

Note: Materials, specifications and floorplans are subject to change without notice. Actual usable floor space may vary from the stated floor area. All room dimensions are shown as approximate. E.&O.E. September 2008.

THE GAULTIER 769 SQ. FT.

TWO BEDROOM + BALCONY (165 SQ.FT.)
TWO BEDROOM + TERRACE (380 SQ.FT.) (FLOOR 4)



FLOOR 4

FLOOR 5

FLOORS 6-10

FLOOR 11

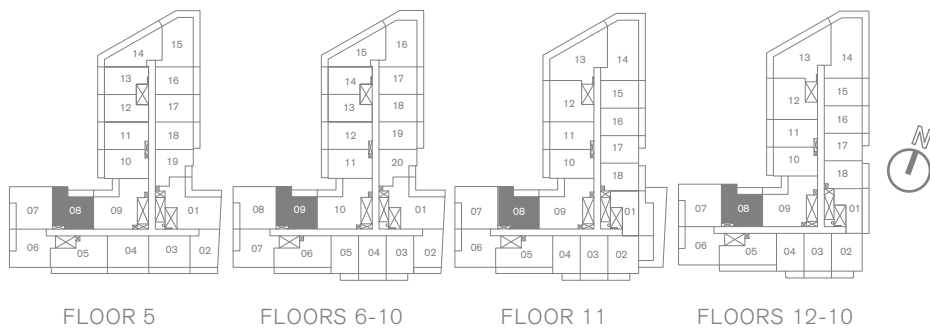
FLOORS 12-23

(2B-4)

Note: Materials, specifications and floorplans are subject to change without notice. Actual usable floor space may vary from the stated floor area. All room dimensions are shown as approximate. E.&O.E. September 2008.

THE MISSONI 785 SQ. FT.

TWO BEDROOM + BALCONY (80 SQ.FT.)

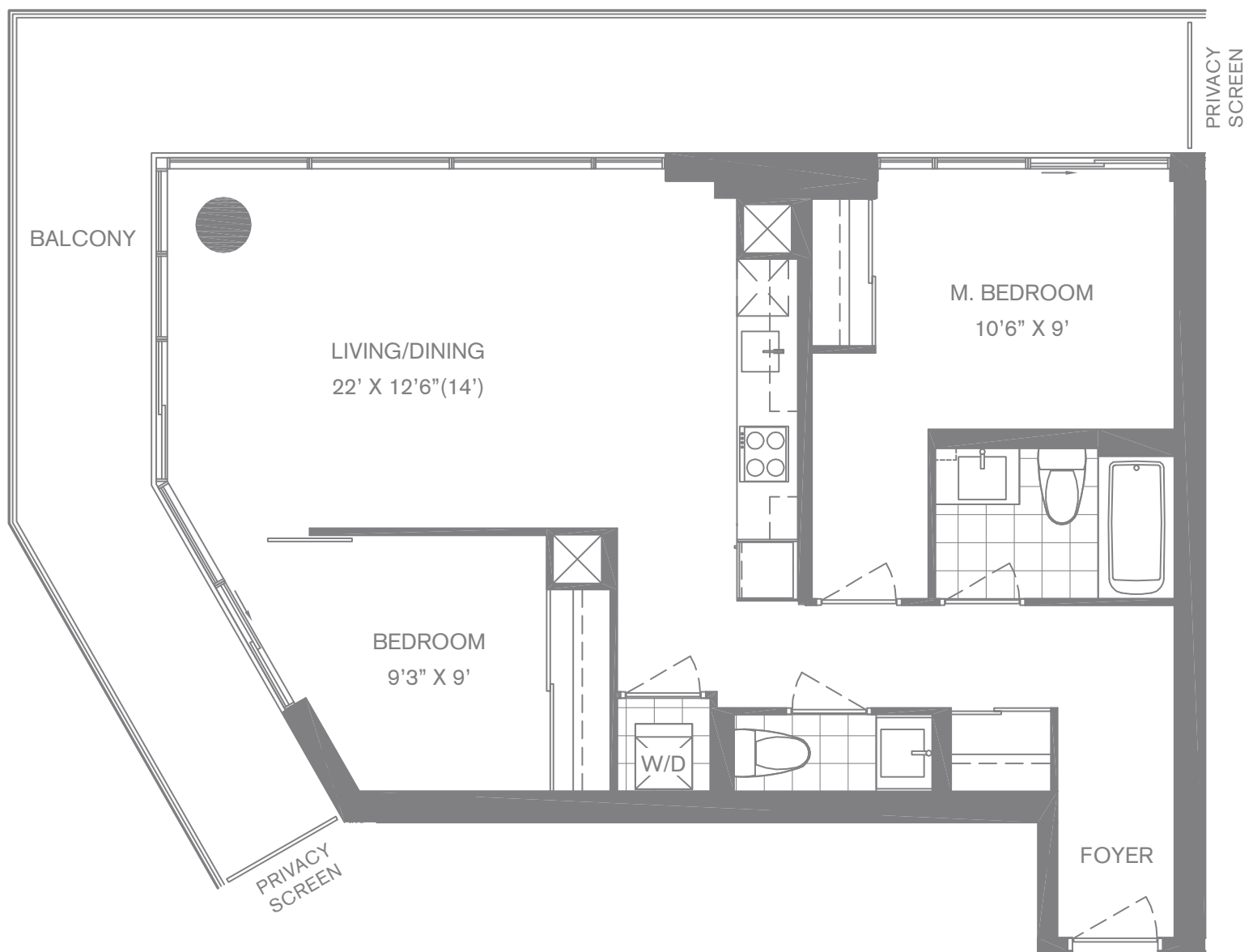


(2B-6)

Note: Materials, specifications and floorplans are subject to change without notice. Actual usable floor space may vary from the stated floor area. All room dimensions are shown as approximate. E.&O.E. September 2008.

THE FENDI 825 SQ. FT.

TWO BEDROOM + BALCONY (310 SQ.FT.)



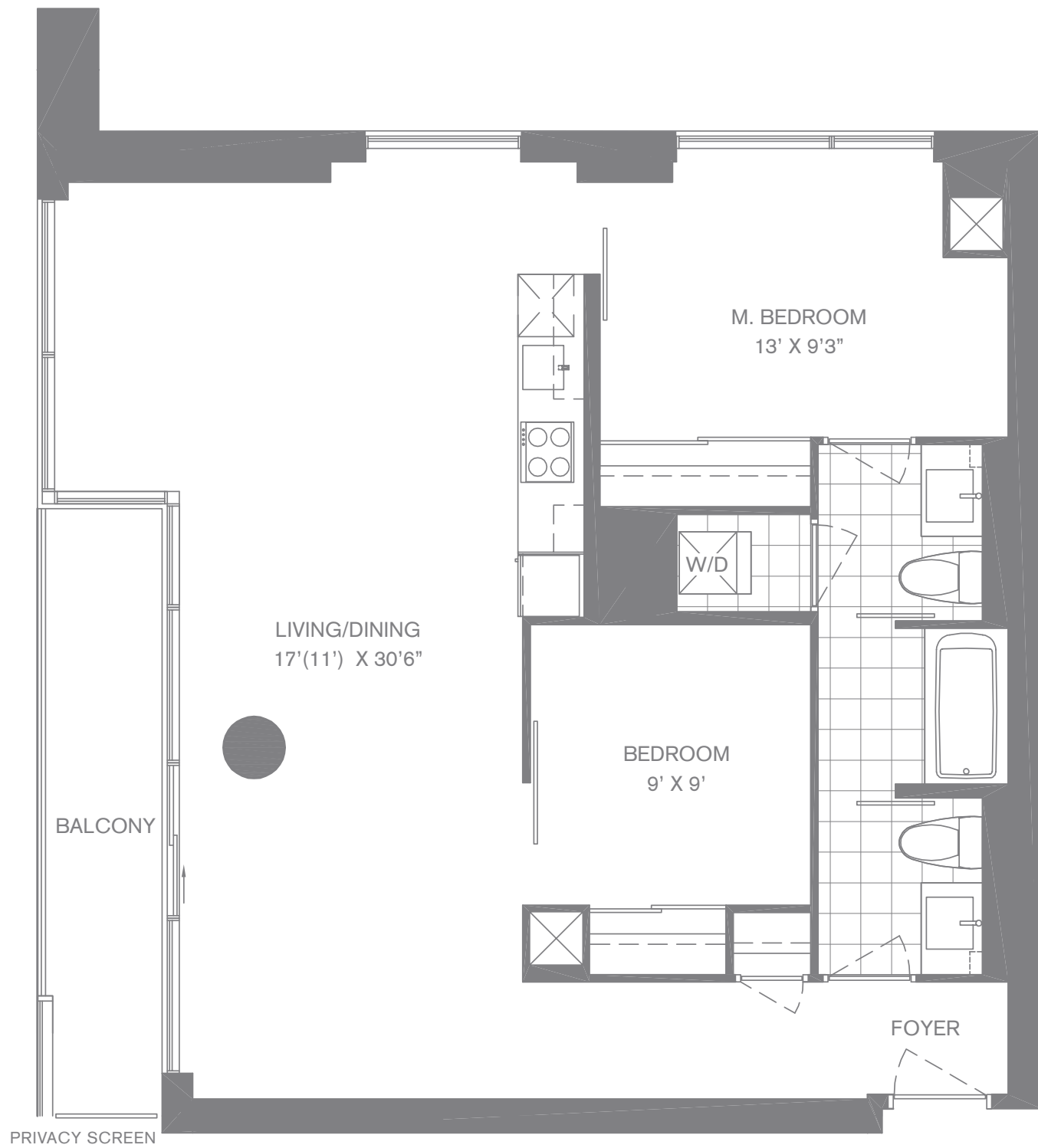
(2B-8)

Note: Materials, specifications and floorplans are subject to change without notice. Actual usable floor space may vary from the stated floor area. All room dimensions are shown as approximate. E.&O.E. September 2008.

THE ARMANI

920 SQ. FT.

TWO BEDROOM + BALCONY (60 SQ.FT.)

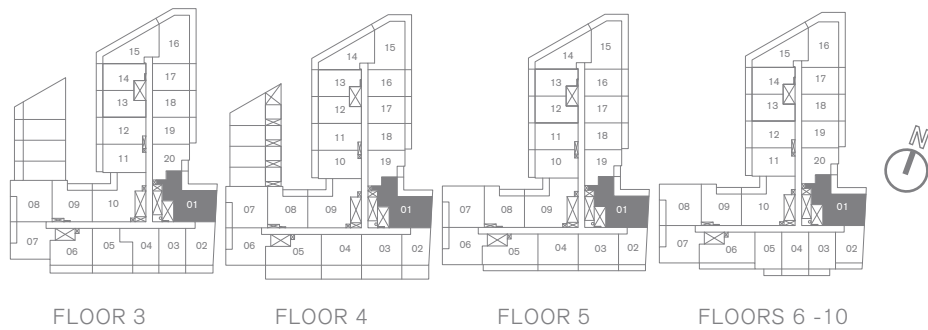
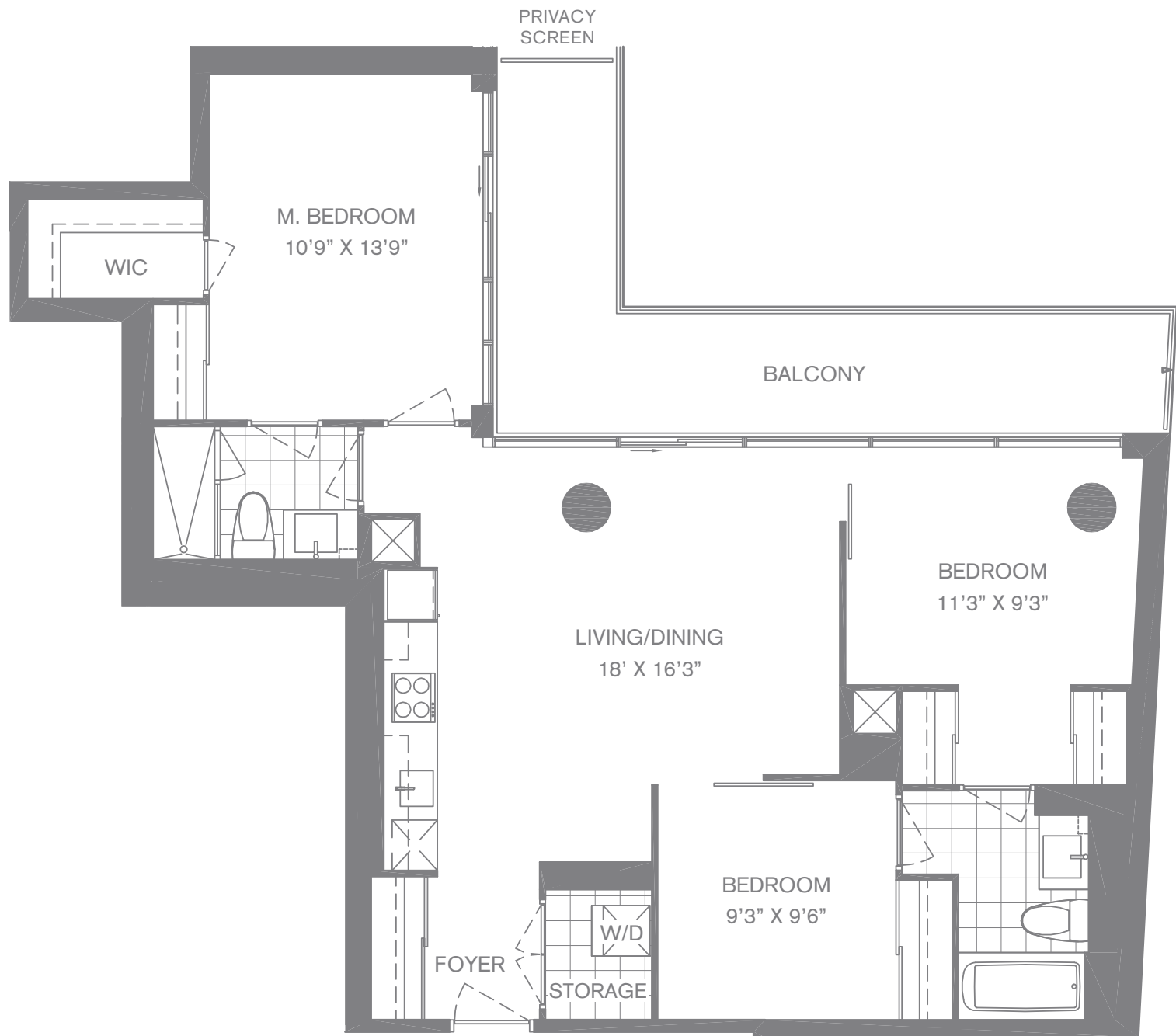


(2B-11)

Note: Materials, specifications and floorplans are subject to change without notice. Actual usable floor space may vary from the stated floor area. All room dimensions are shown as approximate. E.&O.E. September 2008.

THE VAN GOGH 1045 SQ. FT.

THREE BEDROOM + BALCONY (160 SQ.FT.)



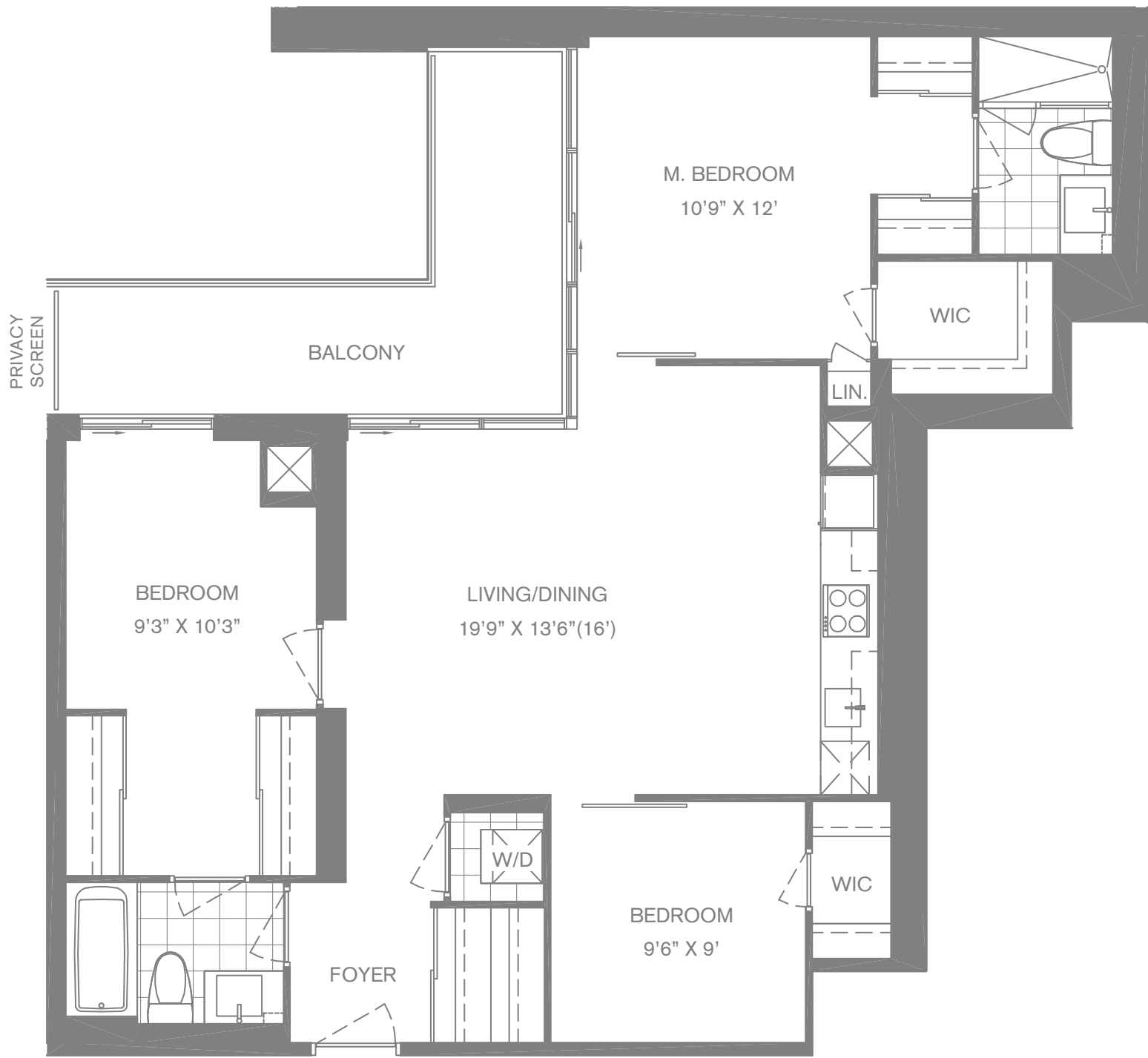
(3B-1)

Note: Materials, specifications and floorplans are subject to change without notice. Actual usable floor space may vary from the stated floor area. All room dimensions are shown as approximate. E.&O.E. September 2008.

THE PICASSO

1073 SQ. FT.

THREE BEDROOM + BALCONY (120 SQ.FT.)



FLOOR 3

FLOOR 4

FLOOR 5

FLOORS 6-10

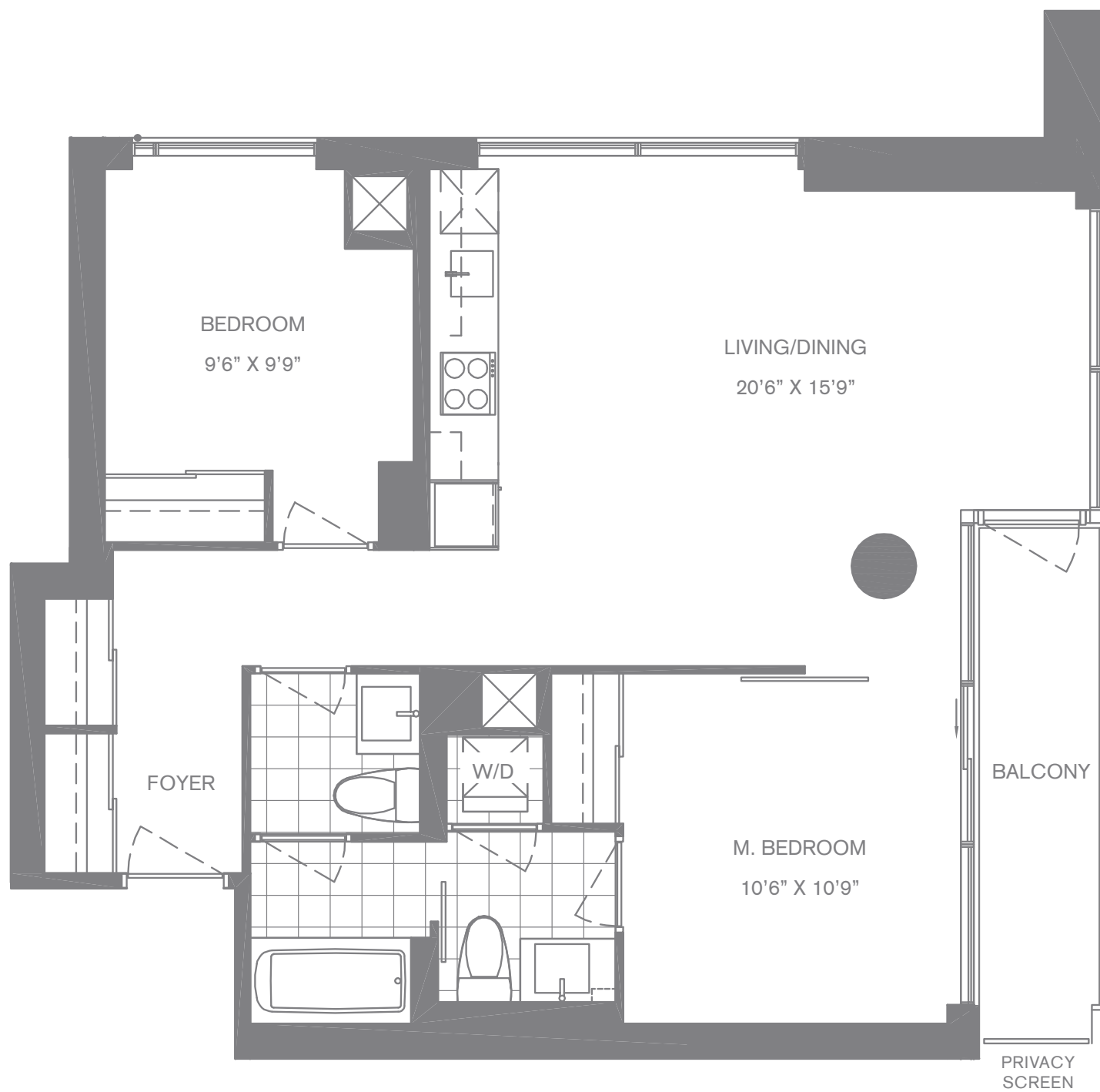
FLOOR 11

FLOORS 12-23

(3B-2)

THE WARHOL 824 SQ. FT.

TWO BEDROOM + BALCONY (50 SQ.FT.)



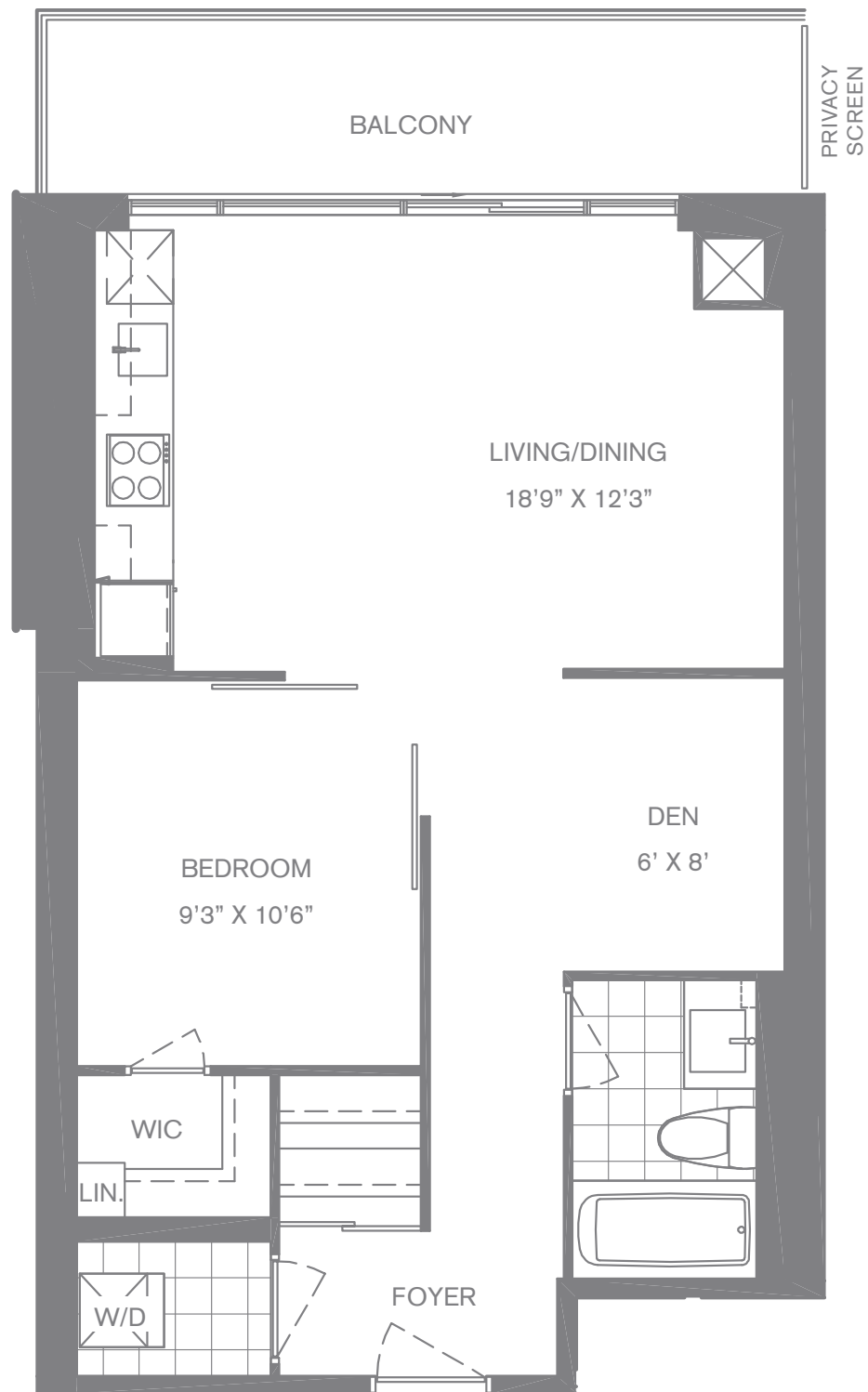
(2B-7)

Note: Materials, specifications and floorplans are subject to change without notice. Actual usable floor space may vary from the stated floor area. All room dimensions are shown as approximate. E.&O.E. September 2008.

THE PROUST

659 SQ. FT.

ONE BEDROOM + DEN + BALCONY (85 SQ.FT.)



(1B+D-2)

Note: Materials, specifications and floorplans are subject to change without notice. Actual usable floor space may vary from the stated floor area. All room dimensions are shown as approximate. E.&O.E. September 2008.

THE McCARTNEY 570 SQ. FT.

ONE BEDROOM + BALCONY (80 SQ.FT.)



FLOOR 3

FLOOR 4

FLOOR 5

FLOORS 6-10

FLOOR 11

FLOORS 12-23

(1B-5)

Note: Materials, specifications and floorplans are subject to change without notice. Actual usable floor space may vary from the stated floor area. All room dimensions are shown as approximate. E.&O.E. September 2008.